



7th
ON THE AT 7

A COLLABORATIVE THAT CONCEPTUALIZES
AND DESIGNS EVENTS WHICH MAKES
FOR A CREATIVE EXPERIENCE.

FEATURING
ROB BRINSON'S
NEW SERIES
"UP AGAINST THE WALL"

WEDNESDAY,
DECEMBER

7th / 7^{pm}

RSVP: INFO@SOUTHERNEXPOSUREATL.COM

887 WEST MARIETTA STREET NW, STUDIO B
ATLANTA, GA 30318

POP-UP AT THE LOFT DEC. 8TH-9TH. JEWELRY • CLOTHING • HOME ACCESSORIES

S/X

SOUTHERN EXPOSURE

Rob Brinson is a photographer, artist and educator. For the past 29 years, he has traveled the world shooting for national magazines and on commission as a fine artist for major corporations and public space art.

Supporting artists for this show are jewelers Sarah Olson of SCarter Designs, Ingrid Ysla, and Twine and Twig's Elizabeth White and Jacqueline Buckner. They are each using their design talents to create hanging mobiles and will have their jewelry for sale there as well. Joy Thigpen will be designing 3 tablescape installations with her styling talents and Beth Lacefield will be designing original textiles and pillows.

POP-UP AT THE LOFT

WED 7TH, 7-9PM // THURS 8TH, 12-5PM

// FRI 9TH, 10:30-3PM

The artists from this show will sell their wares along with art inspired gifts from Sally King Benedict and clothing from the internet sensation girls Morgan and Kissie from shophippiekids.com among others.



TWINE & TWIG



S/X

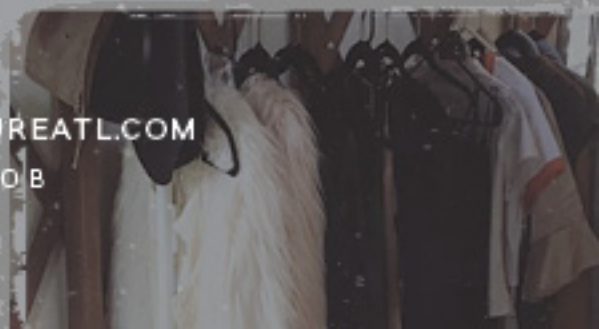
SOUTHERN EXPOSURE

BRINGS YOU

POP-UP AT THE LOFT

WED 7TH, 7-9PM // THURS 8TH, 12-5PM

// FRI 9TH, 10:30-3PM



RSVP: INFO@SOUTHERNEXPOSUREATL.COM

887 WEST MARIETTA STREET NW, STUDIO B
ATLANTA, GA 30318

As part of Southern Exposure's mission to host select social and creative events we present Pop-Up at the Loft. Retail presented in an inspired environment featuring designers offering custom handcrafted wares.

A few of our December artists include S. Carter Designs, Ingrid Ysla Jewelry, Twine & Twig, Sally King Benedict, Lacefield Designs and Hippie Kids apparel.

VENDORS



SALLY KING BENEDICT

TWINE & TWIG